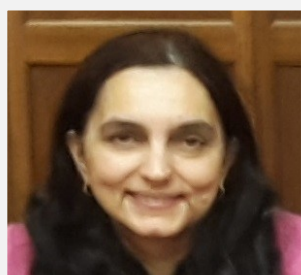


Speakers Biographies



Dr Gita Bhutani

Chair of the North West Psychological Professions Network

**Associate Director for Psychological Professions,
Lancashire Care NHS Foundation Trust**

Honorary Research Fellow, University of Liverpool

Gita is a clinical psychologist and has specialised in working with older people and adults in Glasgow, Salford and currently Lancashire. She is a founding member of the Psychological Professions Network and its current chair. Gita's current role is as Associate Director for Psychological Professions at Lancashire Care NHS Foundation Trust. This post combines a governance and leadership role with management. Gita's current clinical work is within the Lancashire Traumatic Stress Service.

Her current clinical and research interests are in post-traumatic stress and staff health and wellbeing. Gita has developed a well-being training package for staff – Looking After You, Looking After Me (LAMLAY) and has presented at conferences in this area. She is also a member of the New Savoy Conference/BPS/DCP Wellbeing Steering Group working on the annual wellbeing survey and the collaborative learning network.

She also contributes to national and professional bodies including committee work and roles at NICE (PTSD guidelines update, Quality Standards), BPS Division of Clinical Psychology. She is joint lead on a regional Schwartz Rounds project aimed at extending Schwartz Rounds across the North West. Gita is currently supporting HEE with psychological professions input into the Advanced Clinical Practice and Consultant framework work streams.



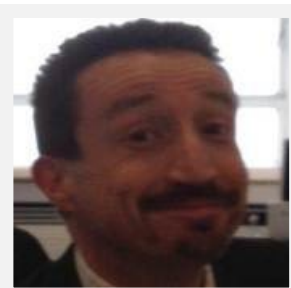
Dr Pete Thomond

Chief Executive of Clever Together

Dr Pete Thomond has worked with companies across the world and holds a PhD from Cranfield University in the field of disruptive innovation and strategy. Pete has worked with over 100 organisations across the world on business improvement, product/service development and strategic transformation.

Today, he focuses extensively in the UK healthcare sector, supporting leaders of NHS Trusts and health organisations to transform their approaches to change and strategic planning, through staff and stakeholder engagement.

Pete is a founding director and Trustee of the award winning charity 'Sport Inspired' that helps young people in tough communities to adopt more active, healthy lives through the power of sport and community engagement.



Andy Gill

Deputy Head of Strategy for HEE, and Programme Manager for the Topol Review Genomics Expert Advisory Panel

Andy is an accomplished healthcare informatician and strategist with over 25 years' experience of working in the NHS. Having originally joined as a graduate trainee, Andy worked in acute, community and mental health providers before leading commissioning functions at Health Authority and PCT level. He then led the development of Data Accreditation for the NHS Information Centre and HRG v4 for the Health and Social Care Information Centre. He has worked closely with the Department of Health on many national policy developments including Informatics, Data Quality and Systems Management, as well as the development of Commissioning for Quality and Innovation (CQUINs).

Andy has a wealth of experience working with a range of organisations within the NHS as well as a strong track record of work with academia having led the development of the Institute of Digital Healthcare at the University of Warwick in collaboration with the Warwick Medical School. He is currently Deputy Head of Strategy for Health Education England having led the development of HEE's Strategic Framework ('Framework 15') and continues to lead work setting out HEE's long-term strategic direction.

Andy was programme manager for the Genomics Advisory Panel advising the Topol Review Board in developing its report on behalf of the Secretary of State for Health and Social Care, and has led a number of stakeholder events to develop and explore the evidence for the report.



Dr Rachel Lever

Highly Specialised Clinical Psychologist

John Denmark Unit - National Centre for Deaf Mental Health

Rachel is a Clinical Psychologist working at the John Denmark Unit (JDU) the National Centre for Deaf Mental Health, for Greater Manchester Mental Health NHS Foundation Trust, in Prestwich Manchester. Rachel has worked at the JDU for five years, but has worked in the field of deaf mental health for the past nine years.

Rachel works across the north of the UK providing specialist consultation, assessment and intervention to deaf people with mental health difficulties. Specialist interests and research interests are working therapeutically with BSL interpreters, adaptations to therapeutic approaches and effective communication.

Rachel values a person centred approach and the power of a MDT to provide holistic approach to empowering and improving the lives of deaf people with mental health difficulties.



Clare Baguley

Programme Manager & Workforce Lead, North West Psychological Professions Network, Health Education England working across the North West

Clare Baguley is the Programme Manager and Workforce Lead for the Psychological Professions Network within Health Education England across the North West of England.

Her clinical background is as a Cognitive Behaviour Therapist, her early career in mental health was as a Community Psychiatric Nurse. Having moved into higher education in 2004 she led the University of Manchester post-graduate education programme for Psychological Wellbeing Practitioners under the Department of Health's Improving Access to Psychological Therapies (IAPT) programme, which latterly developed to incorporate multi-professional pathways in dementia care and psycho-social interventions for psychosis.

Clare has held regional and national responsibilities for managing and developing the interface between education and workforce transformation. She has a research background in primary care mental health with a particular interest in the use of psychological approaches in physical health care settings.



Dr Alice Plummer

**Clinical Programme Manager, Principal Clinical Psychologist
Psychological Professions Network, Kent, Surrey and Sussex**

Alice Plummer is the Clinical Programme Manager for the Psychological Professions Network (PPN), employed by Sussex Partnership on behalf of Health Education England working across Kent, Surrey and Sussex.

Alice is a Principal Clinical Psychologist, who trained in Manchester, and worked in Greater Manchester for 12 years before relocating to the South Coast. Alice has extensive experience of working with adults of all ages with trauma and high levels of psychological distress, troubling symptoms, long term physical health and co-morbid mental health conditions.

Alice is very passionate about joining up all the Psychological Professions, so we can have a strategic voice to promote what we do, share ideas, clinical excellence and collaborate within a community of psychological practice. And, collaborate with all the stakeholders involved in the planning and provision of psychological healthcare, as well as working in partnership with Experts by Experience, so we can ultimately better serve the people and communities we work with.