

## Introducing our presenters...

### Presenters Biography: PPN Midlands 2<sup>nd</sup> Birthday, showcasing new Psychological Practitioner roles

#### PPN Midlands Team



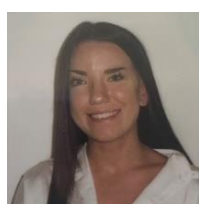
**Dr Sunny Kalsy-Lillico**  
**Chair of Psychological Professions Network Midlands (HEE/NHSE)**  
**Chief Psychologist, Birmingham & Solihull Mental Health NHS Foundation Trust**

Sunny is a HCPC registered Chartered Consultant Clinical Psychologist working in NHS healthcare in Birmingham and Solihull and is Chair of the Midlands Psychological Professions Network. Her current role is Chief Psychologist. Sunny's own personal professional interests and areas of speciality are in ageing, disability issues, the integration of physical health with mental health needs and the promotion of psychological mindedness across systems, teams and organisations. She is a recipient of the British Psychological Society's May Davidson Award for contributions to British Clinical Psychology with her work published in national and international peer reviewed journals and books. Sunny is also a qualified Family Therapist, Mediator, Executive Coach & Mentor and a BPS accredited Occupational Test User for Ability and Personality. Equality, diversity and inclusivity are core to Sunny's values and practices as is her commitment to biopsychosocial approach to health and care.



**James Varty**  
**Interim Psychological Professions Network (PPN) Programme Manager, Midlands**

James has worked in healthcare for over 20yrs. Much of this time has been spent in the Addictions treatment sector, where James began his career working as a Substance Misuse Worker delivering psychosocial interventions to individuals involved with drug related crime. After completing a BSc in Addictions, James progressed into management positions, complimented by a level 7 Institute of Leadership and Management (ILM) Executive Management qualification. James led the business development and quality improvement agendas for Wales's largest voluntary sector Substance Misuse treatment provider, which included a period acting as CEO. He joined Birmingham Community Healthcare NHS Trust in 2019 to lead a regulatory compliance project. He has since been supporting Marilyn and the Trust with various workstreams, including managing PPN Midlands.



**Lauren Ross**  
**Assistant Psychologist, Psychological Professions Network (PPN), Midlands**

Lauren is an assistant psychologist with a background in Psychology (BSc). She has been involved in the establishment and set up of the Midlands PPN. Lauren is committed to help join up all psychological professions and the future psychological workforce to shape a more united voice to support excellent practice. Equality, diversity and inclusivity are core to her values. Lauren is dedicated to working in partnership with experts by experience to improve quality and experience in services.



**Helen Smith**  
**Portfolio Manager (Midlands) – Mental Health, Health Education England**

Helen joined the NHS in 2002, following a career in vocational education and delivering employability projects for people with disabilities. During her NHS career, Helen has held a number of roles all focusing on education, training and workforce development and planning. Helen joined Health Education England at its inception in 2013 and since 2017 she has worked on a range of Mental Health workforce projects and programmes and became the Mental Health Portfolio Manager for HEE in the Midlands in late 2020.

## Presenters



**Lydia Sherlock**

**Education Mental Health Practitioner, Nottinghamshire Healthcare NHS Foundation Trust**

Lydia recently qualified as an EMHP in March 2022. Lydia's experience prior to this has mainly been working in various Eating Disorder services, which prompted her to want to explore what it would be like to work in a service that focuses on early intervention.



**Jennifer Wright**

**Apprentice Clinical Associate Psychologist, Leicestershire Partnership NHS Trust**

Jennifer is currently an apprentice Clinical Associate Psychologist working in Paediatric Psychology for Leicestershire Partnership Trust. She has nine years of experience within the NHS working in settings ranging from secure hospitals and community, with adult populations. Aside from managing the balance of work and university she loves nothing more than taking her cockapoo, Ronnie for long walks!

**Angela Rowley**

**Consultant Clinical Psychologist, Coventry and Warwickshire Partnership NHS Trust**

Dr. Angela Rowley is a Consultant Clinical Psychologist, Professional lead for psychological professions in community mental health at Coventry and Warwickshire Partnership Trust and works as clinical lead psychologist for the Dementia service. Angela has worked at CWPT since 2020, prior to this she was consultant psychologist for the Dementia service in Midlands Partnership Foundation Trust. She has held other roles in neuropsychological services and older adults. Angela has been leading on the development of psychological professions strategy and implementation in the mental health transformation programme at Coventry and Warwickshire Partnership Trust, with particular interest in developing trauma informed services across the trust.



**Kate Parsonson**

**Neurodevelopmental Lead Specialist Mental Health Practitioner, Northamptonshire Healthcare NHS Foundation Trust**

Following completion of psychology degree in 2005 I worked in a short break centres for children with additional needs, autism and challenging behaviour for over 15 years in various roles and finally as the deputy manager before moving into mental health services and completing the CWP course at Reading University. Following this course I worked as a CWP for a short while before moving to Core CAMHS with moderate to severe mental health presentations as a care coordinator and lead practitioner for the Neurodevelopmental pathway. I then moved back to early intervention mental health support and join the newly established Mental Health Support Team becoming the Neurodevelopmental lead across the teams in the county.