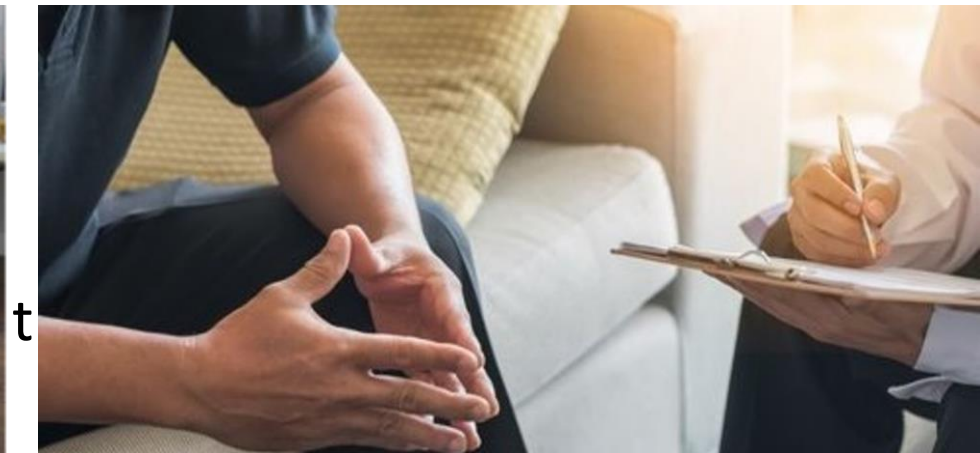


HEE Update



Helen Smith – Portfolio Manager - Mental Health, Learning Disabilities, Autism and Oliver McGowan Mandatory Training

Children & Young People's Mental Health

- The Education Mental Health Practitioner programme continues to grow with new Mental Health Support Teams.
- The Childrens' Wellbeing Practitioner course will be PG Dip from January 2023
 - Including a focus on engaging community settings (e.g. faith-based groups, youth groups and 3rd sector organisations).
- Senior Practitioner role to enhance the stability and sustainability of MHSTs and services with CWPs through:
 - Extending EMHP and CWP low intensity clinical skillset
 - Enable clearer distinctions between the roles of CWPs in community settings, and EMHPs in MHSTs, so that career pathways/skillsets can be developed
- Aiming to introduce Youth Intensive Psychological Practitioner role as part of a pilot



Supporting the NHS Longterm Plan ambitions for adult and older people to transform our workforce for better patient outcomes

14 CBT full course place specialising in either personality disorder or psychosis & bi-polar disorder


23 CBT-ED places which include some salary supported recruit to train posts

9 personality disorder top-up places

10 psychosis and bi-polar disorder top-up places

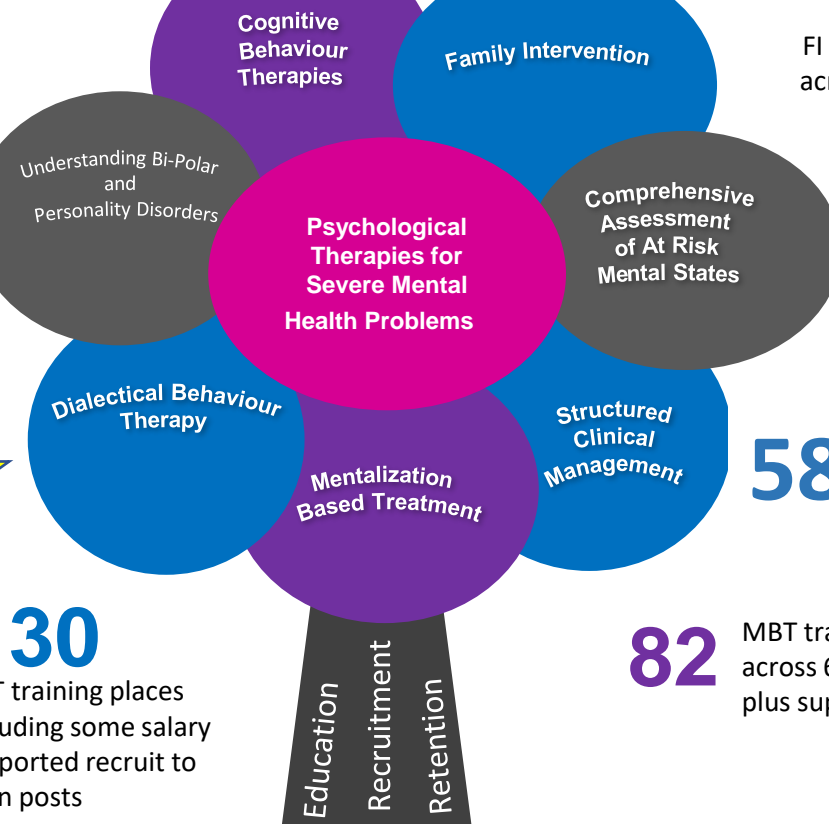
6 CBT ED top-up places

22 teams
A total **354** places



Total training places

771



130
FI training places available across the regions across 4 cohorts

55
CAARMS practitioner two-day training places
With additional supervisor training

58
SCM training places across 6 cohorts plus supervision

30
DBT training places including some salary supported recruit to train posts

82
MBT training places across 6 cohorts plus supervision

47 training places
Eating Disorder Service for Adults Whole Team Training

Mental Health Wellbeing Practitioner

- First cohort started in March at University of Worcester
- Second cohort starts late October
- University of Derby will commence delivery in March 2023
- Potential capacity to train 160 people per year
- Perinatal Mental Health and Drug and Alcohol Services to pilot role too

Adult IAPT

- Continue to commission training to support delivery of the Long Term Plan
- This year non-CBT modality training contributes to workforce expansion targets if recruited into the service.
- Psychotherapeutic Counselling Pilot underway with six places for Midlands.
- Developing work to build sustainable workforce plans for services