

The CAP filling the GAP



Jennifer Wright, Clinical Associate Psychologist Apprentice,
Paediatric Psychology, Leicestershire Partnership Trust.

With Thanks to University of Exeter for providing some of
the Information.

Agenda

Role development

The CAP role

How it works

Positives and Challenges

The future

Poll

Are you familiar with the Clinical Associate Psychology apprentice role?

Has the CAP role been considered in your trust?

Do you have CAP's in your trust?

Have you considered applying for a post?

Role Development

Known in Scotland – benchmark document produced in 2006.

In 2019 there were 138 fte posts in NHS Scotland making up 10% of the workforce.

CAP roles initially developed in Cornwall in 2018 with 15 and then 29 posts.

The first intake of CAP apprentices started in November 2021 with 27.

The CAP Role Description



A Clinical Associate Psychologist (CAP) is a practitioner working within a scope of practice under the direct supervision of a registered clinical psychology supervisor and can work autonomously with appropriate support.

CAPs are based in psychology teams, alongside assistant psychologists and trainee clinical psychologists.

CAPs work with a range of healthcare professionals in a diverse number and variety of services. CAPs will work with nurses, social workers, and medical colleagues as part of a multidisciplinary team.

CAPs are skilled in developing psychological formulations, intervention and evaluation; therefore, this workforce expands the reach of psychology via flexible, individualised, tailored treatment options.

Accreditation and Core Competencies



BPS accreditation standards are approved, and the Committee on Training in Clinical Psychology are setting up an Associates workforce subgroup to oversee accreditation.



Potentially HCPC approval in the future.



The curriculum provides CAPS with knowledge of the fundamentals of applied professional psychological practice and develop population specific competences on placement/work setting.



Core competencies include assessment, formulation, intervention, evaluation and research, communication, professional and values-based practice.

Degree Apprenticeship

- Job with training
- The Institute for Apprenticeships and Technical Education outline 12 key duties of the CAP with 119 Knowledge, Skills and Behaviours (KSB's) statements that determine competences of the CAP
- We have to pass degree qualification, KSB's and an independent End Point Assessment.



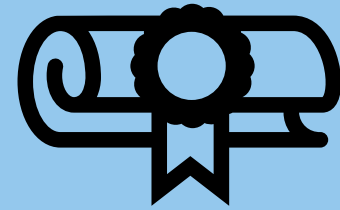
Reasons for Applying



Wanting to progress within psychology.



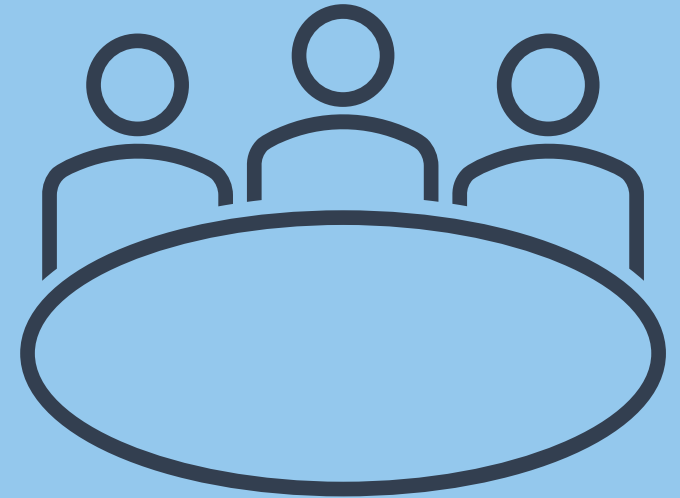
To contribute to the NHS and improve psychological access to others.



The opportunity to complete a degree apprenticeship/masters

How to Apply

- NHS jobs website.
- Five CAP posts advertised for Leicestershire Partnership Trust.
- Interview on teams.
- In training Band 5 and Band 6 once passed End Point Assessment.
- Employed permanently



How it works

Three day work based learning



One online teaching day



One study day

- 18 month course
- The degree apprenticeship teaching is delivered by University of Exeter online.
- For an apprenticeship there has to be 20% 'off the job' learning

Clinical Placement Requirements

A minimum caseload
of 24 cases

Minimum of 160
episodes of clinical
contact are expected
over the course of the
placement module.

12 practice
observations

Typical Week

Monday	Tuesday	Wednesday	Thursday	Friday
Assessments	Referral meeting	Session prep	Online Teaching	Study day Problem based learning groups
Supervision	Reflective practice	Direct patient contact/sessions		
Direct patient contact/sessions	Team Meetings	Admin		

Positives



Being a permanent member of the team.



Working in a team of psychologist



The scope of paediatrics



Learning and putting into practice



Good links with University



Challenges

New role. The service unsure of what the role is/the expectations and where it fits.

One area/team

Shadowing opportunities

Imposter syndrome

Developing relationships with cohort online and being in different locations/services.

Managing work placement, academia and life.



The Future

- Previous candidates have gone on to be Team Managers, clinical training, lecturers on the CAP course, or CAP's



Questions
and/or Feedback?

