

Introducing our presenters... Presenters Biography: Health Inequalities Showcase

PPN Midlands Team



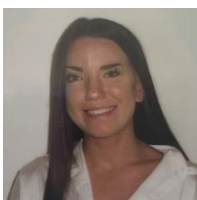
Dr Sunny Kalsy-Lillico
Chair of Psychological Professions Network Midlands (HEE/NHSE)
Chief Psychologist, Birmingham & Solihull Mental Health NHS Foundation Trust

Sunny is a HCPC registered Chartered Consultant Clinical Psychologist working in NHS healthcare in Birmingham and Solihull and is Chair of the Midlands Psychological Professions Network. Her current role is Chief Psychologist. Sunny's own personal professional interests and areas of speciality are in ageing, disability issues, the integration of physical health with mental health needs and the promotion of psychological mindedness across systems, teams and organisations. She is a recipient of the British Psychological Society's May Davidson Award for contributions to British Clinical Psychology with her work published in national and international peer reviewed journals and books. Sunny is also a qualified Family Therapist, Mediator, Executive Coach & Mentor and a BPS accredited Occupational Test User for Ability and Personality. Equality, diversity and inclusivity are core to Sunny's values and practices as is her commitment to biopsychosocial approach to health and care.



Marilyn McKoy
Service Improvement and Development Partner, Psychological Professions Network (PPN), Midlands

Marilyn is responsible for the delivering the programme management of the PPN Midlands. Marilyn is an Occupational Therapist and additionally she holds an MSc in Health Service Improvement. Marilyn has contributed to spreading Improvement methodology both locally and nationally, delivering Improvement methodology training and contributed to publications within Occupational Therapy. Marilyn has worked within the NHS for over 20 years in various clinical and managerial roles and has a passion for improving the quality of care.



Lauren Ross
Assistant Psychologist, Psychological Professions Network (PPN), Midlands

Lauren is an assistant psychologist with a background in Psychology (BSc). She has been involved in the establishment and set up of the Midlands PPN. Lauren is committed to help join up all psychological professions and the future psychological workforce to shape a more united voice to support excellent practice. Equality, diversity and inclusivity are core to her values. Lauren is dedicated to working in partnership with experts by experience to improve quality and experience in services.



Rebecca Jacobs
Assistant Psychologist, Psychological Professions Network (PPN), Midlands

Rebecca joined the PPN Midlands in June 2021, 3 years after graduating in her BSc Psychology degree. She is keen to contribute towards improving psychological practice and is especially interested in utilising the experiences of service users to achieve this. Rebecca also strives to promote and increase awareness of the 12 psychological professions, in hope that this will highlight the opportunities and avenues that are available to those who are interested in pursuing a career in psychology. She believes that psychology should be diverse and inclusive; accessible and available to all.

Presenters



Jaskiern Kaur
Head of Equality, Diversity and Inclusion, Birmingham and Solihull Mental Health NHS Foundation Trust

I simply have a love for people and all that we bring.

Active across OD and Inclusion for the past 15 years I have focused on teams and individual dynamics to engage people in embedding Inclusive practice.

My foundation is that every action has a reaction. In healthcare this impacts on people, patient, public or colleagues-we are all people. Using this key principle I have learnt to engage a variety of different tools that impact our behaviour and enable leadership of self at a number of different levels.

Working through the health sector from grassroots community development to strategic leadership positions I have first-hand experience of connecting policy to practice and making those connections real for us all.

Dr Sally Austen
Consultant Clinical Psychologist, Birmingham and Solihull Mental Health NHS Foundation Trust

Dr Ben Holmes
Clinical Psychologist, Birmingham and Solihull Mental Health NHS Foundation Trust

Dr Sally Austen, Consultant Clinical Psychologist. Dr Austen has worked in deaf mental health care and audiology services for 30 years. She is the Chair of the national 'Sharing Good Practicing' and is working with NHS England to develop protocols for working with British Sign Language interpreters and on improving the effectiveness of the Accessible Information Act for deaf people.

In her private work, as Austen Psychology, Sally is involved in the training and supervision of BSL interpreters, writing and occasional media work.

She and Dr Holmes have recently published the book 'An introductory guide for professionals working with deaf and hard of hearing clients in clinical, educational and social care settings' KDP Publishers, Amazon.

Dr Ben Holmes, Clinical Psychologist. Dr Holmes has worked in deaf mental health care for nearly 10 years. He is the Chair of national Special Interest Group for applied psychologists working with in deaf mental health care. He has additional training and expertise in clinical neuropsychology and trauma informed care.

In his independent practice, Ben lectures on university clinical psychology programmes and works as an Expert Witness for the courts.



Jardel Robinson-Hylton
Assistant Clinical Psychologist, Birmingham and Solihull Mental Health NHS Foundation Trust

Jardel Robinson-Hylton is a first-class Psychology graduate from Aston University. She has worked in Health Psychology and is currently working in acute inpatient services, an Assistant Psychologist within Birmingham and Solihull Mental Health Foundation Trust. She is particularly passionate about ensuring that psychological therapies are accessible to all, regardless of race, sexual orientation, or gender. She aims to pursue a career in Clinical Psychology.